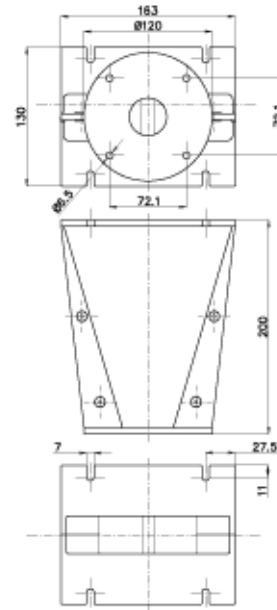




WG141 HF Horns



NOMINAL SPECIFICATIONS

Throat Diameter	36.5 mm (1.4 in)
Frequency Range	0.8-20 kHz
Recommened Crossover Frequency (1)	0.8 kHz
Horizontal Nominal Coverage (-6dB) (2)	110°
Mouth Height	163 mm (6.4 in)
Mouth Width	130 mm (5.1 in)
Depth	200 mm (7.9 in)
Mouth Mounting Holes (4x)	7 mm (0.28 in)
Net Weight	1.4 Kg (3.1 lb)
Shipping Weight	1.65 Kg (3.6 in)
Shipping Box	232x142x179 mm (9.1x5.6x7.0 in)
Material	Al

ORDERING CODES

Ordering Code TBA

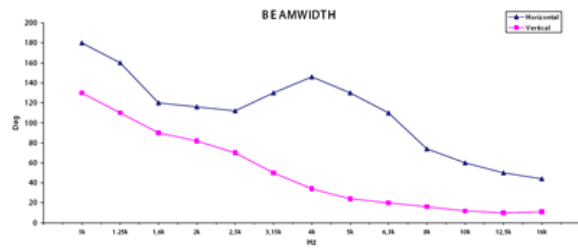
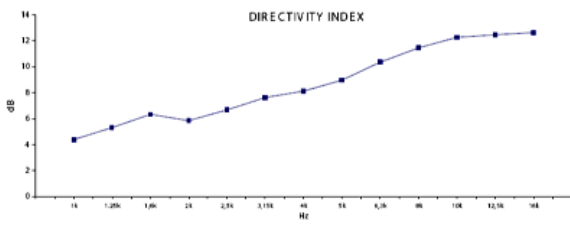
NOTES

() Sold only in combination with a FaitalPRO 1" HF Driver

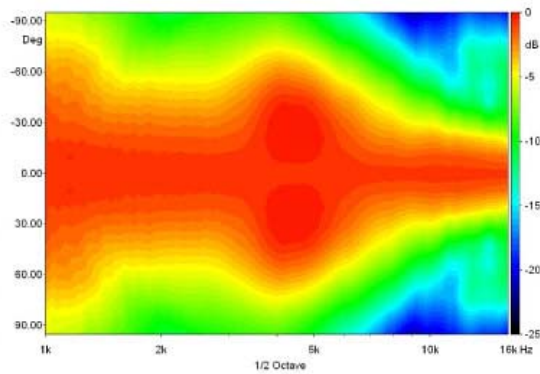
(1) 4 π sr acoustic loading

(2) Average value in frequency range: 1-16 KHz

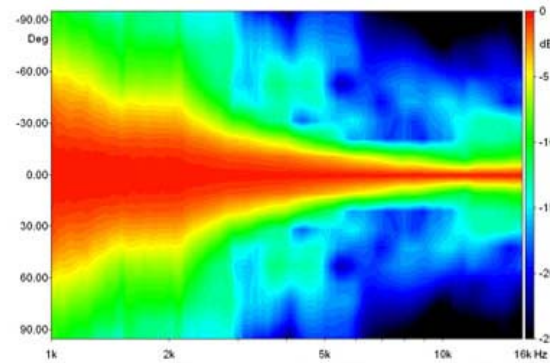
CURVES



BEAMWIDTH

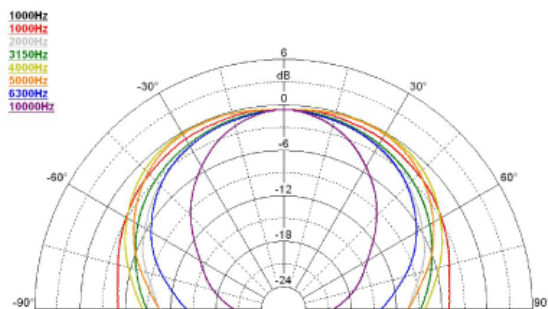


Horizontal Beamwidth

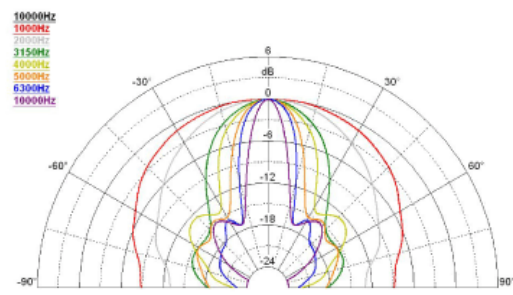


Vertical Beamwidth

POLAR PATTERN



Horizontal Polar Pattern



Vertical Polar Pattern